



MONTHLY MEMBERSHIP PROGRESS REPORT

District 4 C1

Results as of: 02/28/2018

GMT: HOWARD HUDSON

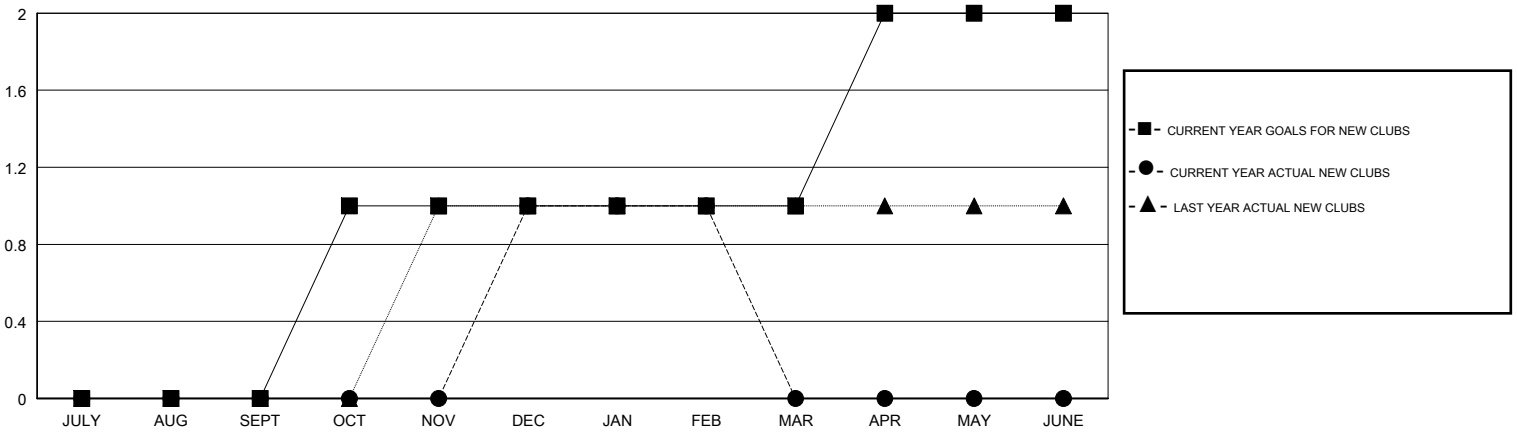
LOCATION CALIFORNIA

GMT CA

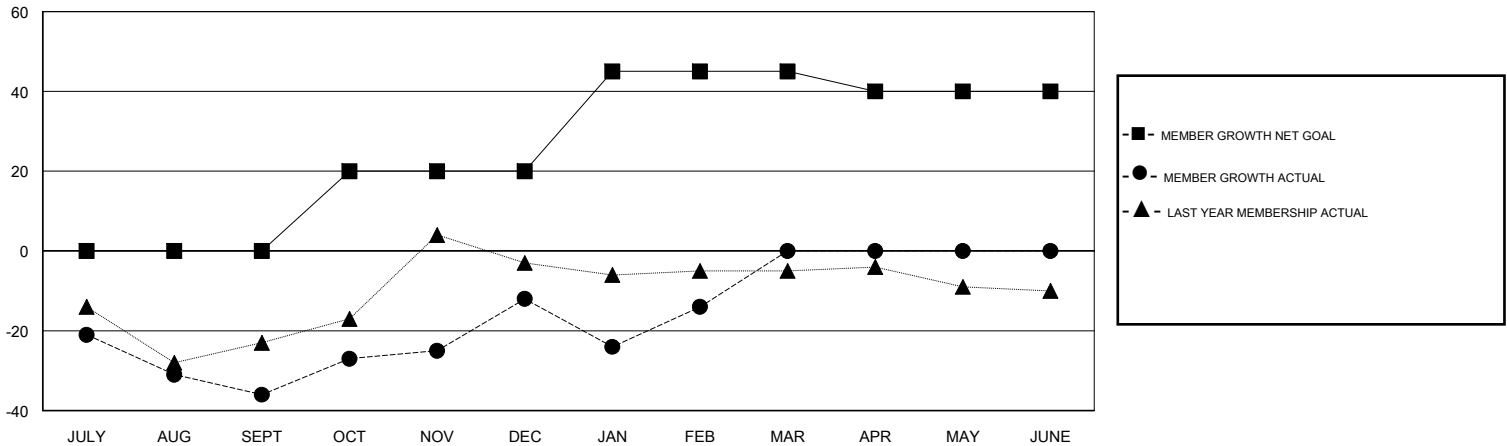
Clubs			
RESULTS FOR 2017-2018			
QUARTER	NEW CLUB GOAL	NEW CLUBS	DROPPED CLUBS
JULY/AUG/SEPT	0	0	0
OCT/NOV/DEC	1	1	0
JAN/FEB/MAR	0	0	0
APR/MAY/JUNE	1	0	0

Members			
RESULTS FOR 2017-2018			
QUARTER	MEMBER GROWTH NET GOAL	MEMBER GROWTH ACTUAL	DROPPED MEMBERS ACTUAL (including transfers)
JULY/AUG/SEPT	0	25	56
OCT/NOV/DEC	20	48	23
JAN/FEB/MAR	25	30	30
APR/MAY/JUNE	-5	0	0

GOALS AND ACTUAL NEW CLUBS CUMULATIVE



GOALS AND ACTUAL MEMBERS CUMULATIVE



DROPPED CLUBS: 0	29 CLUBS OF 47 ADDED 1 OR MORE NEW MEMBERS	<u>GENDER DISTRIBUTION</u>	
		MALE	707 (66.20%)
		FEMALE	361 (33.80%)
		Women Percentage Fiscal Year Goal: 35%	
<u>DROPPED MEMBERS</u>		TOTAL FAMILY UNIT MEMBERS	223
DECEASED	19	FAMILY MEMBERS PAYING HALF DUES	113
CLUB CANCELLED	0		
OTHER	90		
TOTAL	109		

[CLICK HERE FOR CUMULATIVE MEMBERSHIP DATA](#)